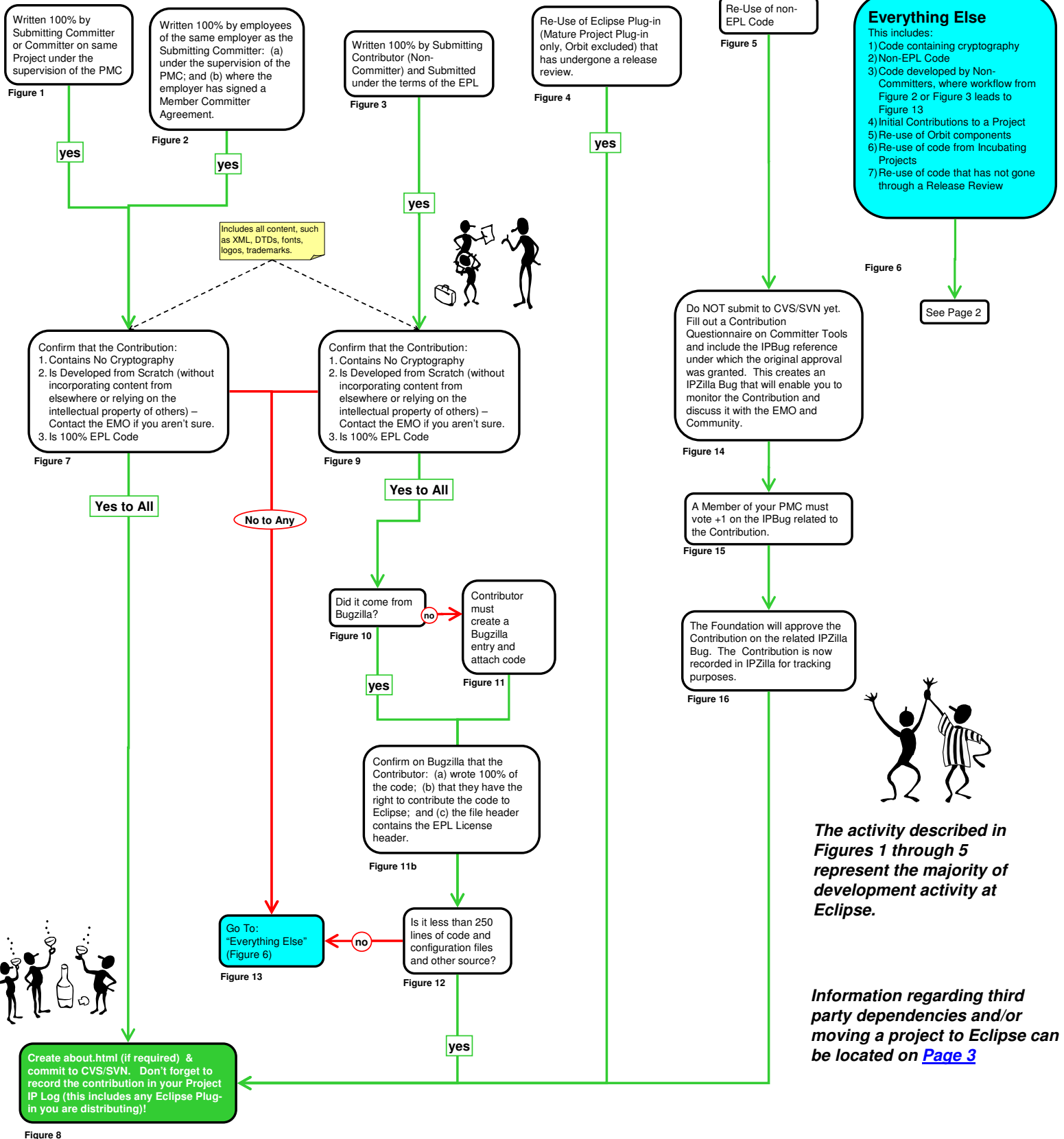


Eclipse Legal Process

Start Here



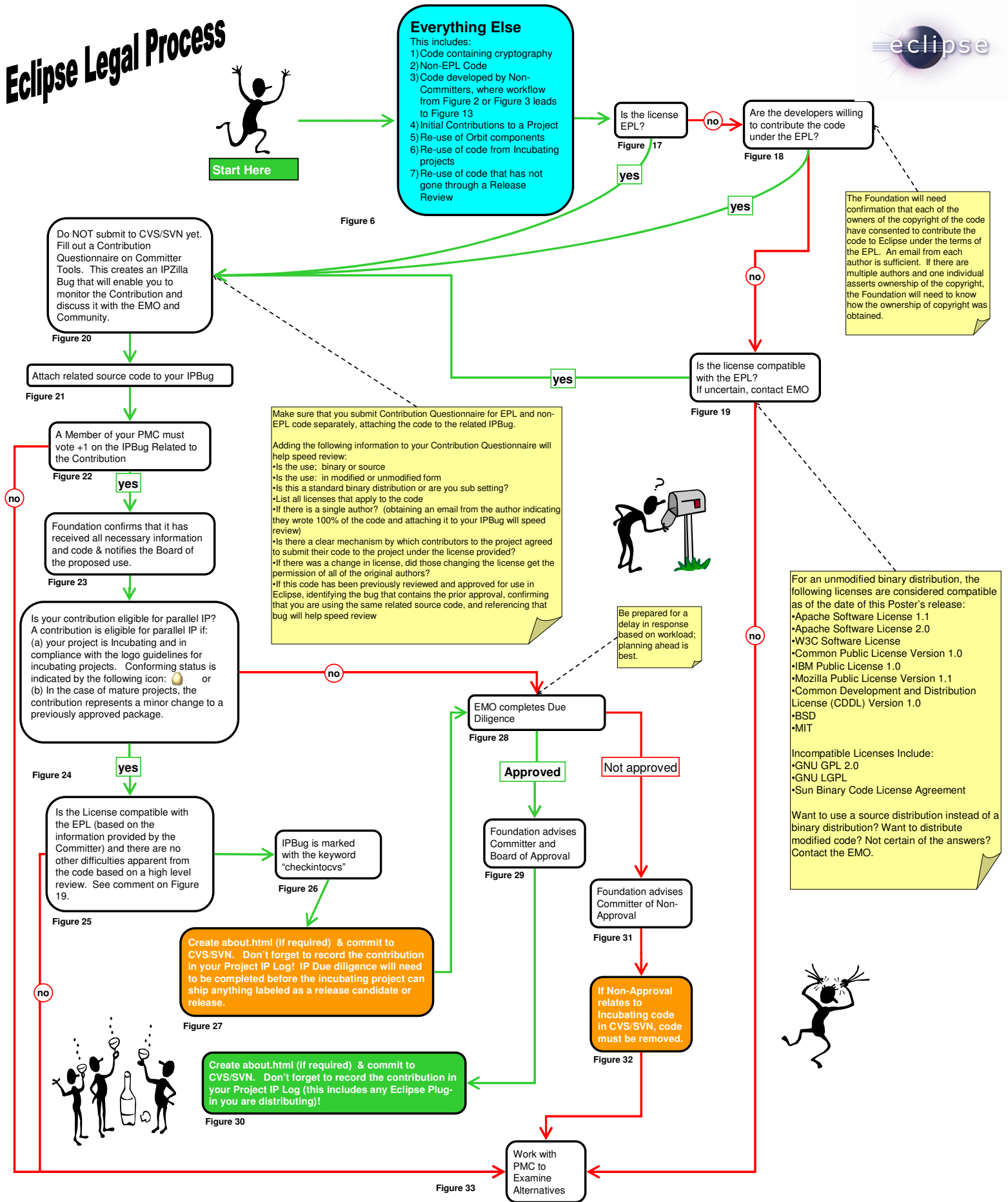
What is the origin of the code?
See Figures 1 through 6 below



The activity described in Figures 1 through 5 represent the majority of development activity at Eclipse.

Information regarding third party dependencies and/or moving a project to Eclipse can be located on [Page 3](#)

Eclipse Legal Process



1. Does your project work with or depend on other third party content?

Please consult the [Eclipse Third Party Dependency Policy](#)

http://www.eclipse.org/org/documents/Eclipse_Policy_and_Procedure_for_3rd_Party_Dependencies_Final.pdf

2. Are you interested in moving third party code to Eclipse with the intent to maintain or evolve the code at Eclipse?

If so, please contact the EMO.