



Location IWG Proposal
June, 2012
Andrew Ross

Location



Location Working Group

The leading place for software components that are location aware, open source, and IP-clean.

Strong Interest

Interested organizations: IBM, Oracle, Autodesk, Pitney Bowes, ESRI, Intergraph, Nokia, Tomtom, Microsoft, Lockheed Martin, OpenGeo, DM Solutions, MapGears, Radiant Blue, Spatialytics, Actian, University of Toronto, Carleton University, Tecterra, World Bank, Ushahidi, and more.

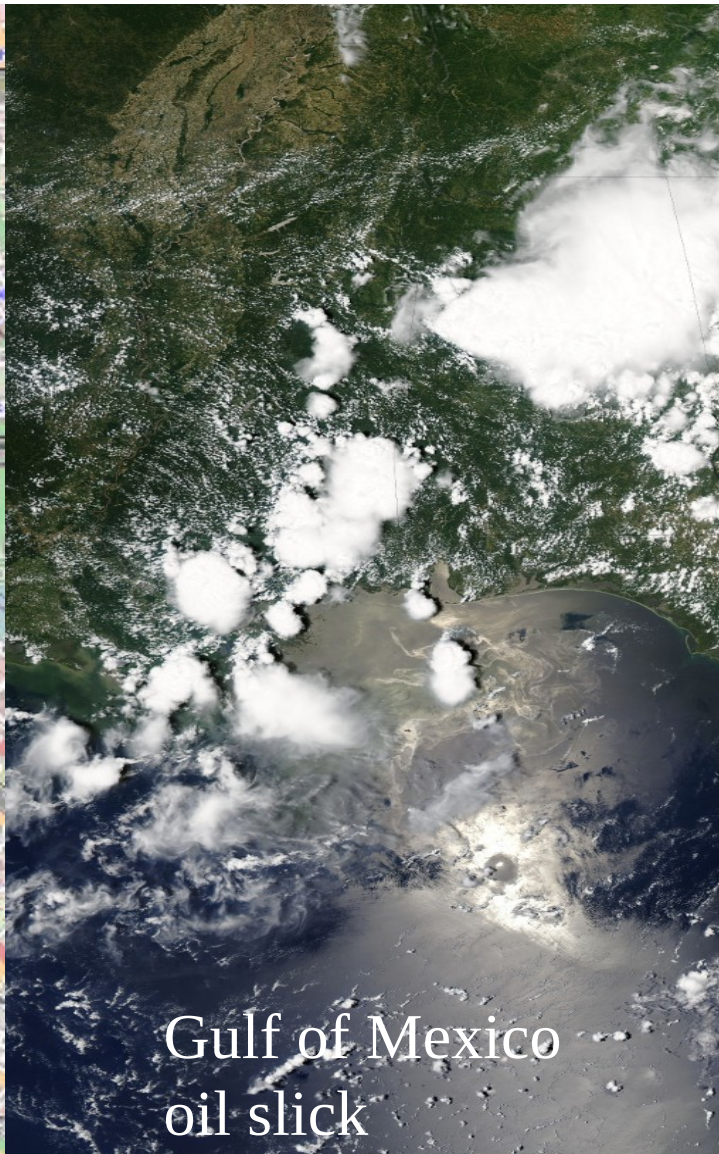
Location Technology



Vector data



Raster data



Combined



Important trends

Use of location technology is growing and undergoing a shift from an asynchronous peripheral activity to a core business activity with real time demands. Machine generated data is spurring a massive increase in the rate data is generated.

Mashups by topic

programmableweb.com

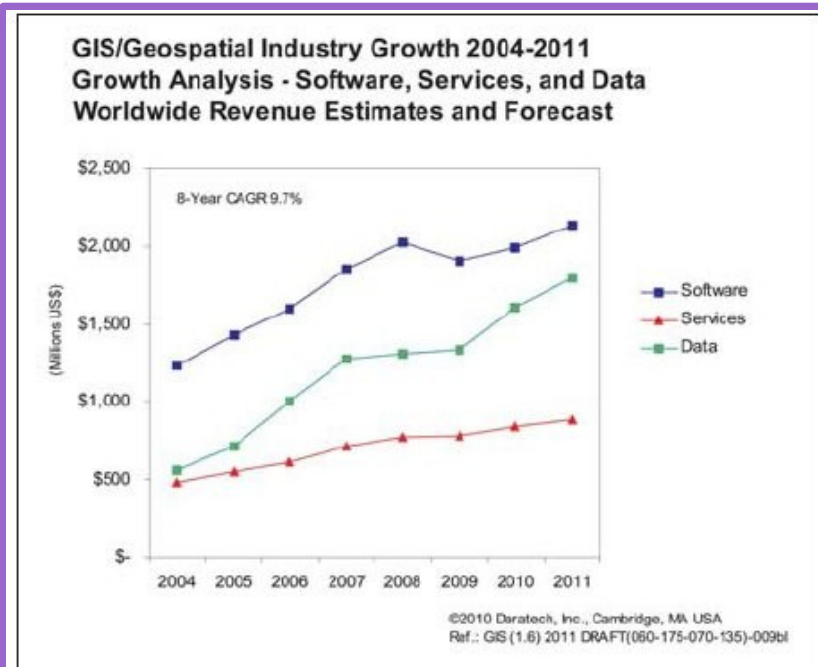
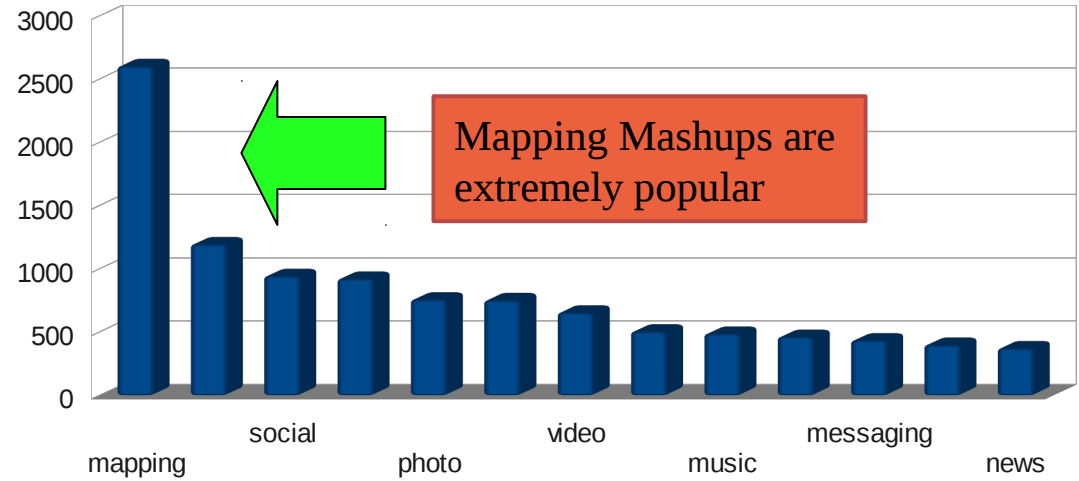
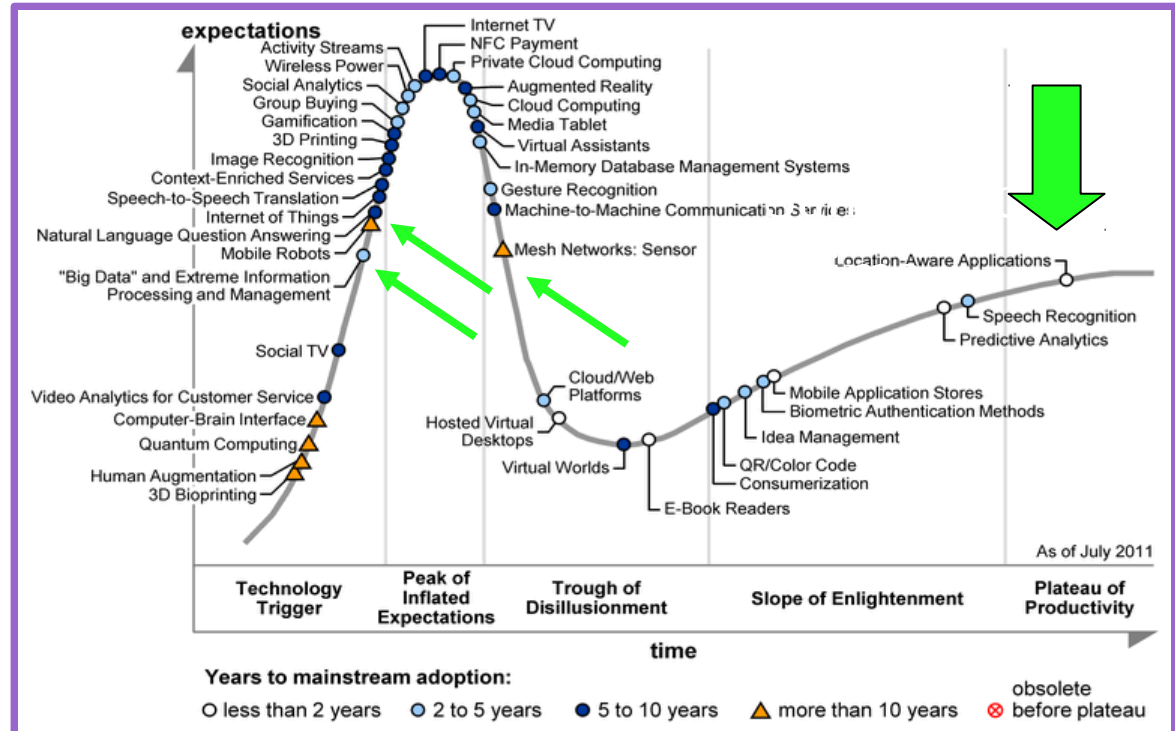


Figure 1



Five forces look at Location

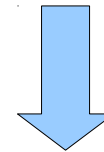


Michael Porter's 5 forces model for competitive intensity



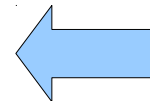
Historically

Dominated by a few large proprietary players eg. ESRI, Digital Globe, Navteq, etc.



Standards & technology change has led to disruption by entrants & new demand e.g. Google, Apple, Microsoft, OpenStreetMap @ the forefront of this.

Pent up & new demand for quality, ip-safe, open source software with a predictable release cycle.



Location IWG Goals



Make location technology mainstream & innovate to new areas

- Leverage Eclipse's established position in enterprise
- Consolidate and bolster open source location (aka. Geospatial) community

Areas of interest

- Processing massive data volume
- Shift from asynchronous to real time analysis
- Shift from peripheral view of location to business critical
- Model driven design i.e. BIM
- Stimulate industry competitiveness & innovation
- Share risk & cost to open new markets, reduce time to market
- Deliver a predictable platform of technologies annually

Location Industry Working Group



Goal: Develop an ecosystem for open source spatially aware components.

Software Providers

IBM, **Oracle**, Autodesk,
Microsoft, ESRI, OpenGeo, **Actian**,
Pitney Bowes, Intergraph,
Spatialytics, Safe Software,
Ubisense, RIM, and more

Service Providers

SAIC, Deloitte, TCS, Wipro,
Accenture, Atos Origin, Radiant
Blue, DMSG, and many more.

Opportunity:

By year
1: \$200K
2: \$400K

Location IWG

Data Providers

Nokia, OpenStreetMap, Digital
Globe, Tomtom, **Google**, GeoEye,
Twitter, Facebook, and more.

Consumers

Halliburton, Lockheed Martin,
Northrop Gruman, Boeing, BAE,
Imperial Oil, NRCan, US Geological
Survey, US Army Corps of
Engineers, NASA, World Bank, Rio
Tinto, BHP Bilton, and many more

Underlined – expressed interest in the IWG. **Bold** – Existing Eclipse Foundation Member.

Location IWG: Steering Committee Fees (Proposed)



Annual Revenue	Annual Steering Committee Dues
>\$250M	\$30,000
>\$100M <= \$250M	\$25,000
>\$50M <= \$100M	\$20,000
> \$10M <= \$50M	\$15,000
< \$10M	\$10,000

- Location **Steering Committee** dues are incremental to Eclipse Foundation membership dues. Must be Solutions member or higher.
- Eclipse Foundation Strategic members paying \$250K annual receive Steering Committee rights for no added cost.

Location IWG: Participant Fees (Proposed)



Annual Revenue	Annual Participant Dues
>\$250M	\$10,000
>\$100M <= \$250M	\$7,500
>\$50M <= \$100M	\$3,500
> \$10M <= \$50M	\$2,250
< \$10M	\$1,000
< \$1M & <10 employees	\$500

- Location **Participant** dues are incremental to Eclipse Foundation membership dues. Must be Solutions member or higher.
- Eclipse Foundation Strategic members paying \geq \$100K annually receive participant rights for no added cost.

Key Existing components



Project	Language	LOC	Committers	License
Geotools	Java	1.7M	25/89	LGPL
JTS	Java	165K	3	LGPL
uDig	Java	324K	23/39	LGPL (=> EPL)
Proj.4	C/C++	64K	11/20	MIT
GDAL/OGR	C/C++	841K	24/46	MIT
GEOS	C++	137K	5/17	LGPL
Mapserver	C	266K	19/51	MIT
OpenLayers	Javascript	140K	43/52	BSD

Active/Lifetime



LGPL software, re-licensing



Outcomes from meeting in Washington D.C. May 23, 2012:

- 1) EPL is the default/recommended license for Location
- 2) Convince strategic existing LGPL projects to re-license. This will take time & require value to the projects.
- 3) A forward looking focus on strategic technology is the priority.

Multiple long-time OSGeo board members & founders are endorsing this IWG. e.g. Dave McIlhagga (DM Solutions), Geoff Zeiss (Autodesk), Chris Holmes (OpenGeo), Mark Lukas (Radiant Blue), Daniel Morissette (MapGears), Michael Gerlek, and more.

Infrastructure



Eclipse Forge
(Public via. eclipse.org)

SCM

Bug Tracker

Builds

Signing

Downloads

Location Forge
(Public via. TBN.org)

SCM

Bug Tracker

Builds

Signing

Downloads

Core team leading the efforts



Tentative
Co-chairs:



Call to Action



Support the creation of a separate forge for Location technologies and approve use of LGPL, BSD, MIT licenses in this separate forge by approving the following:

RESOLVED, the Board approves the creation of information technology (IT) infrastructure for the Location IWG forge. Such IT infrastructure will be hosted and supported by the Eclipse Foundation

RESOLVED, The Board unanimously approves the use of the following licenses for projects hosted by the Location Industry Working Group. Such projects must be clearly identified as separate and distinct from Eclipse Foundation projects, hosted on a web property other than eclipse.org, and not using the org.eclipse namespace.

1. MIT
2. BSD (including the Eclipse Distribution License)

RESOLVED, The Board unanimously approves the use of the GNU Lesser General Public License (LGPL) for third-party components distributed by projects hosted by the Location Industry Working Group. Such projects must be clearly identified as separate and distinct from Eclipse Foundation projects, hosted on a web property other than eclipse.org, and not using the org.eclipse namespace.

RESOLVED, that the Executive Director of the Corporation is hereby authorized and empowered, for and on behalf of the Corporation, to retain such advisers, to execute and deliver such documents, papers or instruments and to do or cause to be done any and all such other acts and things as he may deem necessary, appropriate or desirable in connection with establishing the Location Industry Working Group as described in the presentation made to the Board on this day and attached to the minutes of the meeting as Exhibit L, and the taking of any such action shall be conclusive evidence of the approval thereof by this Board of Directors.

Thank you



Next meeting is June 19th. Contact Andrew to get involved.

andrew.ross@eclipse.org
1-613-614-5772

Back up



Location Terminology



Vector data – points, lines, polygons, etc. representing reality

Raster data – pictures, visible light and other spectrum

WFS standard – Web Feature Service – Vector data

WCS standard – Web Coverage Service - Pictures

WMS standard – Web Map Service – Rendered maps

WKB - Well known binary

WKT - Well known text

Time line

