



# Borland and Eclipse

Strategic Developer Membership

Richard C. Gronback  
February 28, 2005

**Borland®**



# Agenda

- Historic Context
- Current Borland products on Eclipse
- Future of Borland products
- Strategic Developer Commitment
- Graphical Modeling Framework project



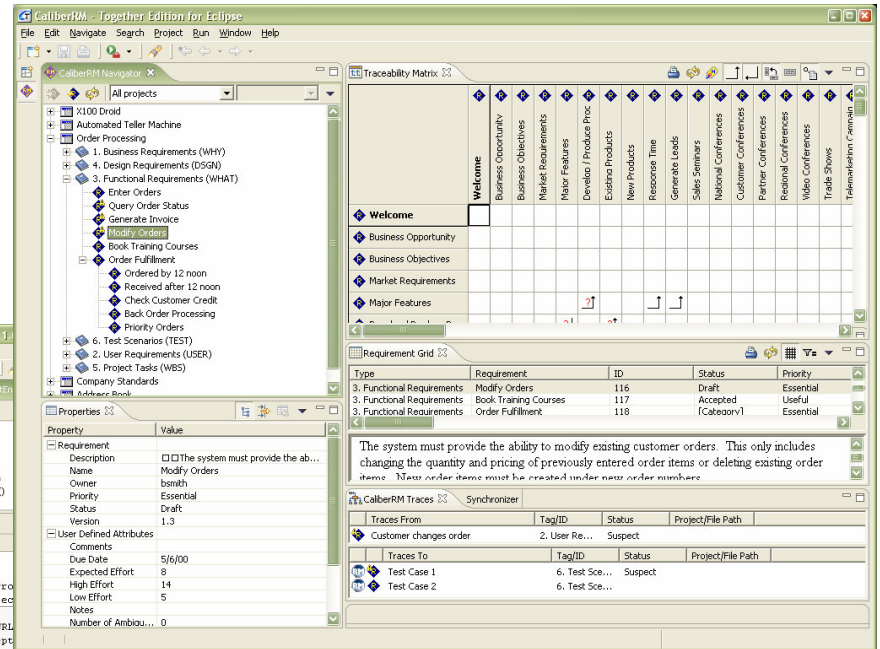
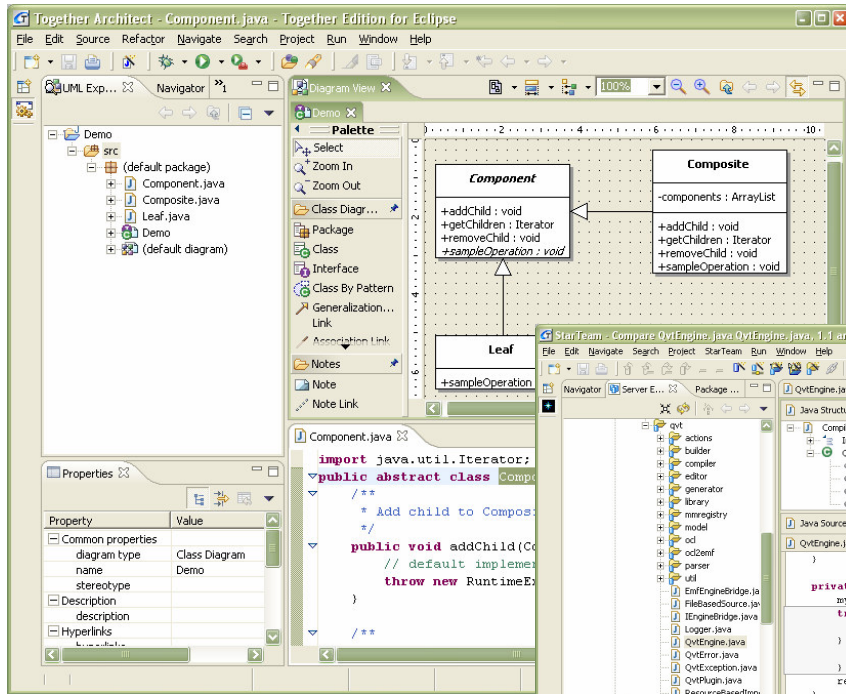
# Historic Context

- Borland & TogetherSoft formed part of the initial Board of Stewards in November 2001
- TogetherSoft's Together<sup>®</sup> product was rewritten on Eclipse and released in late 2002
  - LiveSource<sup>™</sup> UML<sup>™</sup> Modeling for Java
  - Now includes CaliberRM integration
- StarTeam client written for Eclipse
  - Arguably, best in the industry
- Other products in development





# Current Products on Eclipse



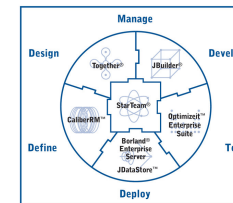
## Together

- LiveSource UML
- Design Patterns
- Doc Generation
- Audits & Metrics

(Next generation in development)

## StarTeam

- Version Control
- Change Requests
- Task Management



## CaliberRM

- Requirements
- Traceability
- Doc Generation





# Strategic Developer

- Motivation for Borland
  - Continued Support of
    - Customers
    - Industry
    - Standards
    - Open source
  - Borland SDO vision is more rapidly realized by leveraging Eclipse
  - Contributing to the Eclipse community is essential to the success of vision!



# Contribution

- Borland brings expertise in:
  - Modeling Tools (Together products)
  - Java/J2EE Development Tools (JBuilder)
  - C++ Tooling (Borland C++ Builder)
  - Performance Tooling (Optimizeit)
  - Requirements Management (CaliberRM)
  - Configuration Management (StarTeam)
  - Source Analysis Tooling (Together audits & metrics)
- Many areas of Eclipse represent potential for Borland contribution
  - EMF, CDT, WTP, JDT, TPTP, BIRT, GEF, etc.



# Contribution

- Borland will commit 8+ full-time developers and additional staff on a part-time basis
  - *Names, experience, and contribution breakdown to be provided by 03/15/2005*
  
- Borland has proposed to lead a new **Graphical Modeling Framework** project...



# Graphical Modeling Framework (GMF)

An Eclipse Technology Project Proposal

**Borland®**





# What is GMF?

- The Graphical Modeling Framework (GMF) Project provides the underlying components and framework for the generation of design surfaces within Eclipse from domain and diagram models.
  - Intended to bridge GEF & EMF, hence GMF
  - Goal: to deliver exemplary diagramming for Eclipse UML2 Project, while providing general diagram support for any domain model

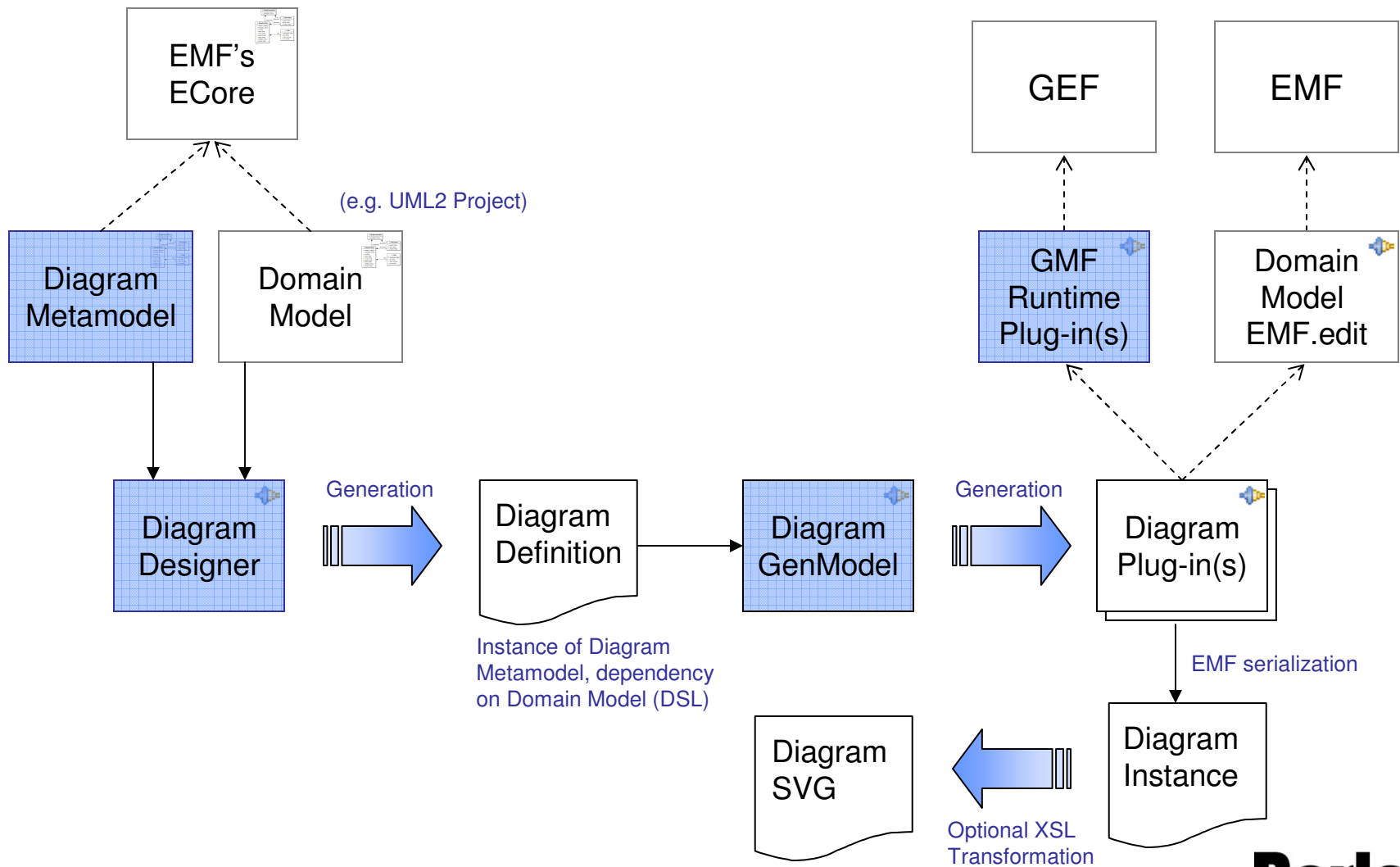


# GMF Overview

- Main Components
  - Diagramming Infrastructure
    - Eclipse framework for design surfaces
      - Editor, view, properties, navigator
    - Generic frameworks for constraint, query, validation, etc.
    - Diagram definition designer (visual option, of course)
  - Diagram Generator
    - Diagram metamodel, generator model, mapping view
    - Generation framework for diagram elements
      - Node, edge, connector, constraints, etc.
    - Constraint implementation generator
  - Exemplary Tools
    - Diagramming for [Eclipse UML2 Project](#)
    - ECore modeling surface



# GMF Overview





Questions?

**Borland<sup>®</sup>**